

# Design and Maintenance of Catwalk Platform on Board Ship for Safe Access to and Egress from Workplace

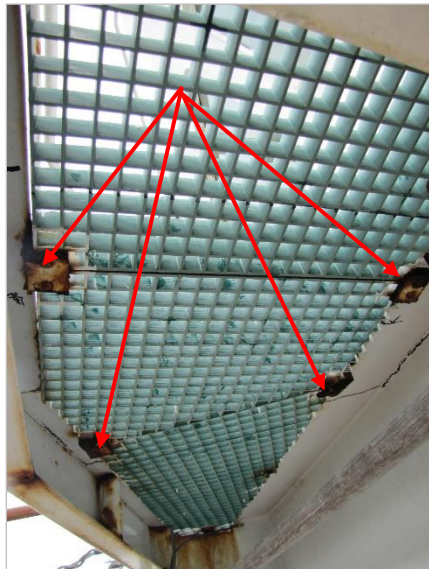
A worker was walking on the catwalk platform on board a ship undergoing repair works when one of the grating panels suddenly gave way. He fell through the opening on the platform and landed on the main deck about 8m below. Investigation revealed that the support brackets of the grating panels were heavily corroded.

Catwalk platform made of grating panels



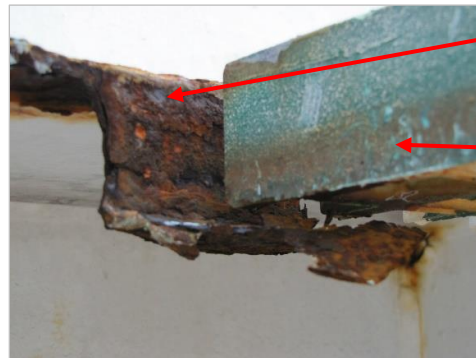
The piece of grating panel that gave way and caused the worker to fall through

The grating panels were held in place by support brackets



Close-up of one of the corroded support

Grating panel



**Recommendations:**

Industry stakeholders are advised to consider the following to prevent a recurrence and ensure a safe and healthy workplace for every person at work:

1. Ship designers, builders and repairers to ensure that design and construction of vessels (including all means of access and egress from a workplace) are in accordance to relevant standards or guidelines;
2. Classification societies to be more prudent in their vessel surveys and recommend necessary measures to vessel owners to address any unsafe conditions revealed during the surveys;
3. Vessel owners to ensure that their vessels are properly maintained in accordance to suitable maintenance regime; and
4. Ship repairers to carry out safety inspections on the ship's access and work platforms, railings, ladders and walkways etc., to ensure that they are safe for use, e.g. there are no corrosion or rusted parts, before any work activities are allowed to be carried out.

*\*written by the Ministry of Manpower (MOM)*